

Round Mirrors

Original equipment to 1965.
Fits all bugs to 1967.

Brightly chromed metal assembly
supports optically corrected mirror.

Mounts to door hinge pin.



6018	Round Mirror (Driver Side)
6019	Round Mirror (Passenger Side)

Oval Mirrors

Visual optics help diminish glare
and vibration. Chrome plate for
beauty and durability.

Oval Mirrors can be used on all
bugs and convertibles to 1967.
They mount to the top door
pin hinge.

Fits Type-1 Sedans, to '67.



6009	Oval Mirror (Driver Side)
6010	Oval Mirror (Passenger Side)

Side View Mirrors

Fits Type 1 Sedans.

Fits Driver or
Passenger side.

Nut & Ferrel
sold separately.



6006	Side View Mirror (Flat 4)
6007	Side View Mirror Nut & Ferrel (Flat 4)

Chrome Late Model Mirror

Screws into driver
side door of all '68
& later bugs. Fits like
OEM equipment.

These mirrors are manufactured from heavy gauge metal, triple
chrome plated and provided with optically corrected glass mirrors.

Fits Type-1 Sedans, '68-later.



6011	Chrome Late Model Mirror (Driver Side) 68-on
6015	Chrome Late Model Mirror (Passenger Side) 68-on

Late Convertible Mirrors

Fits like OEM
equipment.

Available to fit
those cars with
factory equipped
threaded insert in
drivers door.

Manufactured from heavy gauge metal, triple chrome
plated and provided with optically corrected glass mirrors.



5998	Late Convertible Mirror (Driver Side)
5999	Late Convertible Mirror (Passenger Side)

Universal Billet Mirror

Universal in design to fit
most any application.
Machined from high
quality aluminum
and then triple chrome
plated for a long lasting
durable shine. Same
mirror works for both
right and left sides.



6670	Universal Billet Mirror Clamp (required for installation)
6672	Universal Billet Side View Mirror - Oval
6673	Universal Billet Side View Mirror - Rectangle

Type-2 Bus Mirror (Early)

Now available in bright chrome to replace broken and rusted mirrors. The mirror mount doubles as the door hinge pin on early Type-2's.

If your mirror is broken off at the hinge, this mirror replaces the whole thing, door hinge pin and all. One part number fits either side: order two for a matched set.



6020 Chrome Early Type-2 Bus Mirror (fits to 1967)

Type-2 Bus Mirrors (Late)

Fits late VW Buses. Available in chrome or black, left and right side models. Threads right into factory mounts. Easy to install. Also adds safety and a custom look. High quality glass mirrors are optically corrected to provide long trouble free service.



6012 Black Type-2 Bus Mirror (Driver Side)

6016 Chrome Type-2 Bus Mirror (Driver Side)

6017 Chrome Type-2 Bus Mirror (Passenger Side)

Type-2 Stainless Side Mirror

Type-2 Vintage '50-67 Stainless Side Mirrors for Right Side or Left Side.

Part of Flat 4's "Dennis' Collection"

Sold Separately.



T2-129a Type-2 '50-67 Stainless Side Mirror (Left Side)

T2-129b Type-2 '50-67 Stainless Side Mirror (Right Side)

**CHECK US OUT
ONLINE AT**

cbperformance.com

And Follow us on Social Media:

[Facebook.com/CBperformance](https://www.facebook.com/CBperformance)

[Instagram.com/cb_performance](https://www.instagram.com/cb_performance)

[YouTube.com/CBperformance](https://www.youtube.com/CBperformance)

Outer Door Handles (each)

Quickly replaces worn and defective parts and is a great answer for missing keys.



3706 Outer Door Handle with Keys '60-64 (each)

3707 Outer Door Handle without Key '60-64 (each)

3734 Outer Door Handle with Key '65-66 (each)

3709 Outer Door Handle with Key '68-on (each)

Outer Door Handles (pairs)

If you don't want a key for each door, then a pair of new Outer Door Handles is the way to go.



3742 fits '68-79 VW Buses (Matched pair w/Keys)

3743 fits '60-64 Type-1 Sedans (Matched pair w/Keys)

3744 fits '65-66 Type-1 Sedans (Matched pair w/Keys)

3745 fits '68-on Type-1 Sedans (Matched pair w/Keys)

Bug Sedan Windshields

This item is available only for Counter Pick-up.

COUNTER
SALES ONLY

DOES NOT SHIP!



5210	Windshield Bug Sedan 1958-64
5211	Windshield Bug Sedan 1965-77, Super Beetles 1971-72

BOSCH Wiper Blades

Sold in pairs.



7515	Wiper Blades - Type-2 68-on - 16" (pair)
7516	Wiper Blades - Type-1 58-64 - 10" (pair)
7517	Wiper Blades - Type-1 68-on - 11" (pair)
7518	Wiper Blades - Super Beetle 73-79 - 15" (pair)
7519	Wiper Blades - Karmann Ghia 68-74 - 13" (pair)
7525	Wiper Blades - Type-1 Sedan '65-67 - 10" (pair)

Outside Door Window Scrapers



113-853-321AL	Outside Door Window Scraper - left ('53-64)
113-853-321AR	Outside Door Window Scraper - right ('53-64)
113-853-321d	Outside Door Window Scraper w/Trim Frame - left ('65 on)
113-853-322d	Outside Door Window Scraper w/Trim Frame - right ('65 on)

Door & Vent Wing Seals

Keep your doors and vent wings sealed up and looking good with these quality replacement seals.

111-831-449	Door Mounting Screw Cover - OEM
111-837-439d	Top/Rear of Door Window Felt Channel (48.5" or 72")
111-837-625	Vent Wing Seal 52-64 (left & right set)
111-837-625d	Vent Wing Seal 65-77 (left & right set)
111-837-629	Vent Wing Post Seal (left & right)
311-837-433a	Door Seals - Vent Wing Post Felt Channel - 32.5" long (pair)
211-837-629	Seals - Vent Wing Post Seals Bug 65 on and Bus up to '67 (pairs)
211-831-721.722d	Type-2 Bus Door Seals - '68-79 (pairs)



Front Turn Signal Seals

Seal out the weather and add that professional touch in one easy operation.

Shipped in sets of two.



111-191f	fits Type-1 Sedan '54-57 (pair)
111-192f	fits Type-1 Sedan '58-63 (pair)

Fender Beading

Replacement Rear Fender Beading, to clean up your ride.

A must for any quality restoration project.

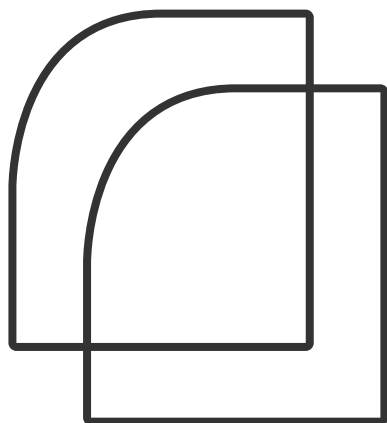


5816	Fender Beading - Black (four fenders per roll)
5818	Fender Beading - Black Type-1 Front Fender (pair)
5819	Fender Beading - Black Type-1 Rear Fender (pair)]

Door Seal Kit

Keep old man winter from cooling your toes with a set of super sealing rubber door seals.

Molded of jungle fresh black rubber to withstand the rigors of rain, mud and freezing weather.



5860	Door Seal Kit 50-66 (left & right)
5861	Door Seal Kit 67-77 (left & right)

Inside Door Window Scrapers

Sold individually. Fits Type-1 Sedans.



111-837-475	Left or Right '52-64
111-837-475a	Left w/7 Clips ('65-mid68)
111-837-475b	Left w/4 Clips ('68-77)
111-837-476	Right w/7 Clips ('65-mid68)
111-837-476a	Right w/4 Clips ('68-77)

Body to Chassis Seal

A new body to chassis seal is an absolute must for that complete restoration job. These are manufactured from thick cushy weather and ozone resistant rubber to seal out dirt and moisture.

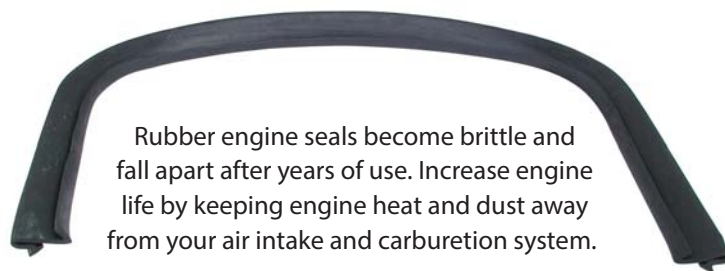
One kit fits all VW sedans ('46-77), including split windows to Super Beetles.



5885 Body to Chassis Seal (Type-1)

Engine Seal Molding

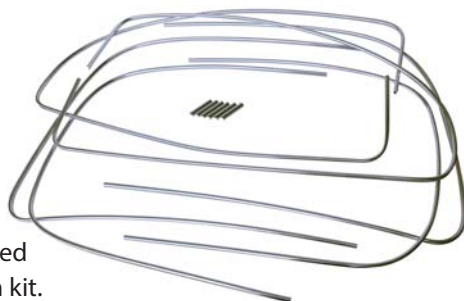
Rubber engine seals become brittle and fall apart after years of use. Increase engine life by keeping engine heat and dust away from your air intake and carburetion system.



5875 Engine Seal Molding (Rear) to '67
5876 Engine Seal Molding - Rear - 68-on
5879 Engine Seal Molding - Front Engine Seal Bell Housing Side - Type-1

Aluminum Trim for Window Rubber

Original German polished aluminum window trim kit.



Top German quality PM brand that is no longer available. Limited to supply on hand - when they are gone, they're gone!

5858 Aluminum Trim for Window Rubber
Fits '65-68 VW Bug (one set)

Cal-Look Window Rubber Kit



Now you can move up to the new "California Look" with your VW Bug. Top quality rubber weather-strip kits are now available to fit all years and models of VW Sedans. The kits feature unshrinkable, water tight molded rubber weather strips with the chrome molding channel removed for that 'blacked-out' look.

5850 4 piece kit fits Sedan '53-57
5851 4 piece kit fits Sedan '58-64
5852 4 piece kit fits Sedan '65-71
5854 4 piece kit fits Sedan '73-77

Horn Grills

Exact replacement parts to fit VW Sedans to 1967.

Manufactured from form-pressed aluminum and plated for beauty and long life. Shipped in sets of 2.



INSTALLATION: To install the horn grills, gently bend all 4 tabs inward, install horn grill through the hole, and then reach up underneath the fender and bend them back out to secure in place.

5123 Horn Grills - VW (set of 2)

Gravel Guards

Rare NOS German Polished Aluminum Gravel Guards.

Sold in pairs.



5596 Rear Gravel Guards (one pair)

Running Boards

Bolts right onto all bugs and Super Beetles for that bold Cal-Look.

They fit all VW Sedans and are sold in sets of 2.



- | | |
|------|--|
| 6037 | Black Billet Running Boards (set of 2) |
| 6038 | Billet Running Boards (set of 2) |
| 6039 | Heavy Duty Running Boards (set of 2) |

Antennas

Fits just like original equipment to restore your radio reception.



- | | |
|------|---|
| 7175 | Single Side Mount (chrome) fits '49-66 Type-1 VW's |
| 7177 | Cowl Mount (chrome) Type-1 & 2 '68-on |
| 7738 | Double Side Mount (chrome) up to '67 Type-1 or Type-2 |

Car Covers

4 Layer Dura-Lite is spun bonded. It's non-woven, providing a barrier against dust and dirt.



The unique dura-lite manufacturing process incorporates an ultraviolet resistant chemical directly into the fabric.

- | | |
|------|---|
| 7200 | Car Cover - VW Sedan or Ghia |
| 7201 | Type-2 VW Bus Semi-Custom Cover (4 Layer) |
| 7203 | Car Cover Lock Kit |

Bumper Bolt Kit

Each bumper bolt kit comes complete with bolts, nuts and washers.

Bolts are 8 x 15mm Long.



- | | |
|------|-----------------------------------|
| 6029 | Plated Bumper Bolt Kit (set of 4) |
|------|-----------------------------------|

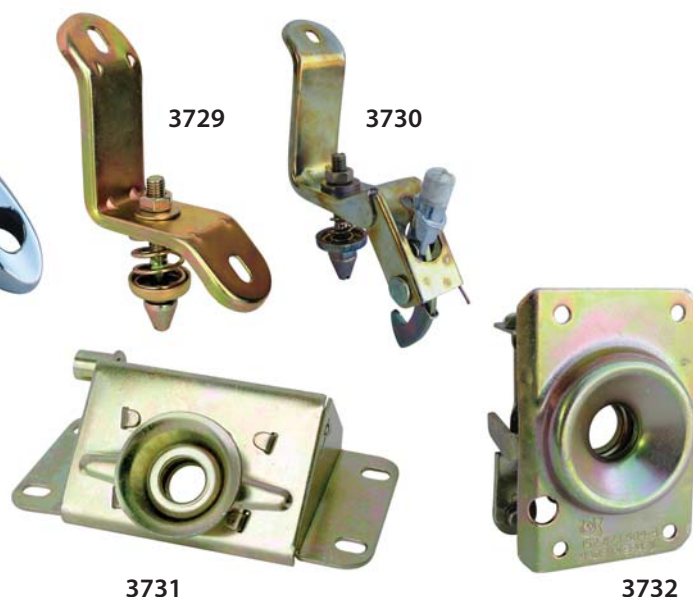
Bumper Grommet Kit



- | | |
|------|--|
| 6045 | Bumper Grommet Kit (fits '54-67) 8 Piece |
| 6046 | Bumper Grommet Kit (fits '68-73) 4 Piece |

Front Trunk Accessories

Here is a selection of Front Trunk Lid Handles, Lid Catches and Front Lock Carrier Assemblies.



3727	Front Trunk Lid Handles (to '67)
3728	Front Trunk Lid Handles ('68 on)
3729	Front Trunk Lid Catch (fits '50-67)
3730	Front Trunk Lid Catch ('68 on)
3731	Front Trunk Lock Carrier Assembly (to '67)
3732	Front Trunk Lock Carrier Assembly ('68 on)

Super Beetle Hood Seal

Hood Seal for Super Beetles.



133-823-731 Super Beetle Hood Seal

Front Hood & Engine Lid Seal

Keep the cold wind and rain out of your trunk - slip in a set of heavy super crush rubber hood and deck seals. They install in just minutes. (113-823-731b)



5872	Front Hood Seals - fits VW Sedans except Super Beetle
5873	Engine Lid Seal - fits VW Sedans (111-827-705)

Engine Air Vent Covers

Sold in Pairs.



5880 Engine Air Vent Covers - fit '71-77 Beetles

License Light Seal



This Seal fits around the base of the License Light hood on the rear decklid of a VW Thing.

361-943-191a License Light Seal - VW Thing

Flat 4 Vintage Eyebrow Deck Lid

Made from Black Gel Coat Fiberglass, and ready for sanding and painting.

Fits Type-1 Sedans to 1966.



4835 Flat 4 Vintage Eye Brow Deck Lid (to '66)

Body Gasket Set

MADE IN THE USA!

You get them all in this kit - hood seal, deck, lid seal, fender beadings and bumper bracket grommets. Molded from durable high quality rubber for easy installation and long life.



5870 Body Gasket Set - Complete '54-67

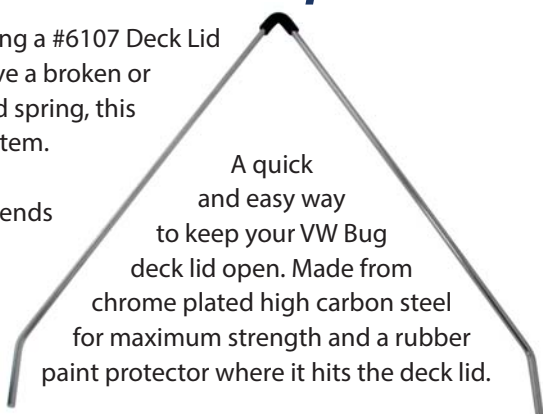
5871 Body Gasket Set - Complete '68-on

Chrome Deck Lid Prop

If you are running a #6107 Deck Lid Standoff, or have a broken or missing deck lid spring, this is a must have item.

Simply slip the ends into your stock hinge holes.

A quick and easy way to keep your VW Bug deck lid open. Made from chrome plated high carbon steel for maximum strength and a rubber paint protector where it hits the deck lid.



6001 Chrome Deck Lid Prop

Engine Compartment Latches

Works on Type-1 Sedans.



3724 Locking - Late Style w/Square Mounting Hole '53-66

3725 Locking - Late Style w/3 Screw Mounting '67-71 & Type-2 '67 only

3726 Locking - Late Style w/1 Screw Mount '72-on

Stand Off Kit

Scoops in cool air to lower engine temperature by up to 30°F.

Cast from sturdy aluminum and pre-drilled for easy installation.

Can be used on all VW Sedans. Includes bolts and mounting washers.



6107 Stand Off Kit

Chrome Deck Lid Spring & Hinges

Made like original parts, with a bright chrome plate finish!

This is the finishing touch to your bugs engine compartment. They are easy to install and fit all years of VW Type-1 sedans.



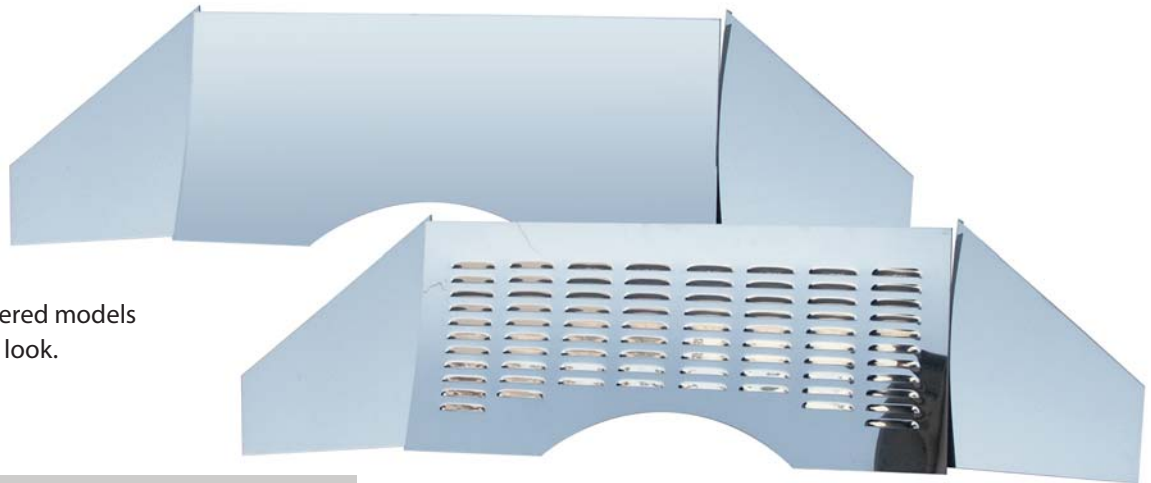
6004 Chrome Deck Lid Spring (1 only)

6005 Chrome Deck Lid Hinges (set of 2)

Stainless Steel Firewalls

Install aluminum or stainless steel firewall cover for safety and show car looks.

You can choose from plain or louvered models that slip right in for a total custom look.



5991	Stainless Steel Firewall - Polished (3 pieces)
5992	Stainless Steel Firewall - Polished with Louvers (3 pieces)

Sedan Engine Compartment Cover

Insulate your engine compartment for added safety and noise reduction.

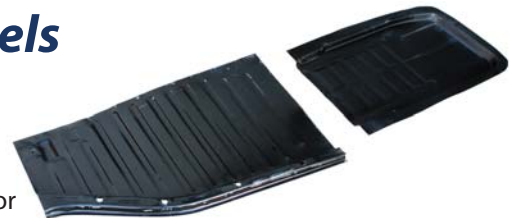


It's easy to install and fits all VW Sedans including Super Beetles. Also known as an engine firewall.

5994	Sedan Engine Compartment Cover
------	--------------------------------

Floor Panels

Replacement floor pans make it fast and easy to fix your Bug's rusted out floor pans. End the results of spilled battery acid, road salt, and thousands of miles of wear and tear. Three replacement panels are available for fast installation. You can weld them in, bolt them in, or even use pop rivets to secure them to the car. Special tools or shop equipment is not required. Manufactured from durable heavy gauge steel.



5140	Floor Panels - Left Front
5142	Floor Panels - Left Rear

BLAZECUT Automatic Fire Supression System

Protect your cherished ride from potentially going up in flames! It uses HFC-236fa, which is an extremely effective, clean and people-safe extinguishing medium.

Installation is simple - use the included zip ties to mount it to the underside of your deck lid for Type-1 Sedans, or directly above your engine in the engine compartment on Type-2's! No drilling or machining required! **NOTE: Shipping only to customers in th Continental U.S. (lower 48 states) via UPS GROUND ONLY.**

7205	BLAZECUT Automatic Fire Supression System (6 foot length, for Type-1's)
7206	BLAZECUT Automatic Fire Supression System (9 foot length, for Type-2's)

