

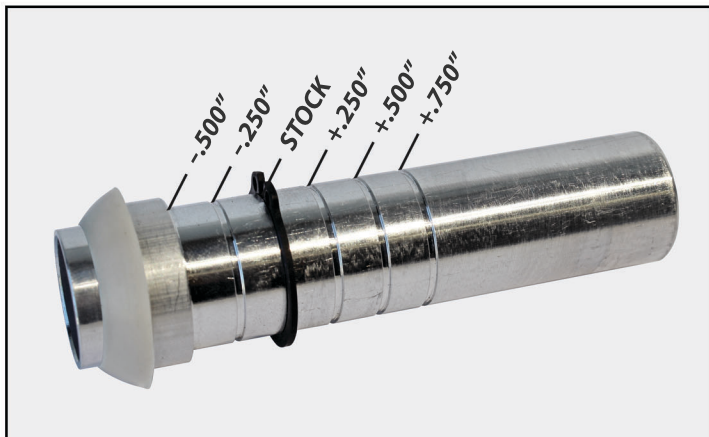
# **PRO-SERIES** **Adjustable** **Push Rod Tubes**

- **PRECISION, NO LEAK FIT!**

- **USES FACTORY PUSH ROD TUBE SEALS**

- **FINALLY, AN ADJUSTABLE PUSH ROD TUBE WITH CONSISTENT SPRING TENSION, REGARDLESS OF ENGINE WIDTH!**

**MADE IN THE  
USA!**

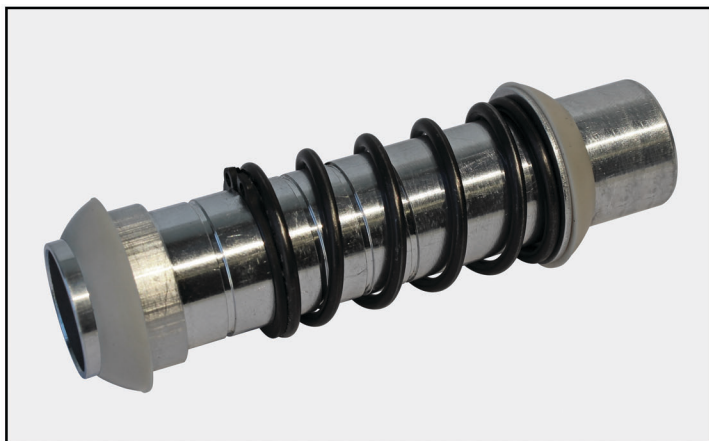


## **STEP 1**

Move the Snap Ring to the groove that corresponds to your engine's width. At  $-.500''$  position, no snap ring is needed.

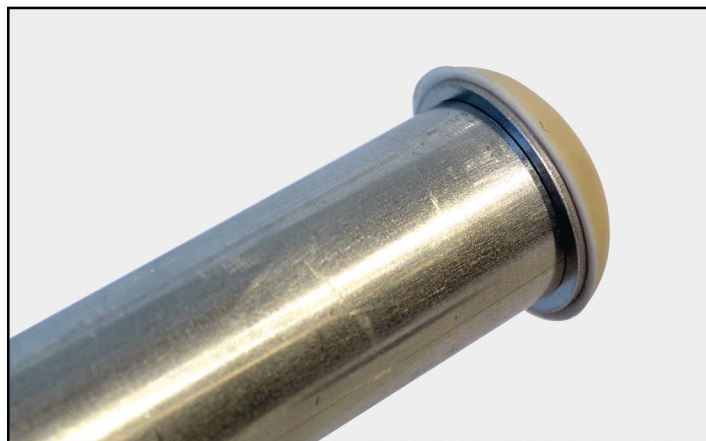
## **STEP 2**

Apply a light film of oil to the Inner/Lower Tube, so that the seal can slide freely.



## **STEP 3**

Add Spring, Washer and Seal to the Inner/Lower Tube.



## **STEP 4**

Add Washer and Seal to the Outer/Upper Tube.



1-800-274-8337  
559-733-8222

**CB PERFORMANCE**  
HIGH PERFORMANCE  
RACING PRODUCTS

Complete Online Catalog:  
[cbperformance.com](http://cbperformance.com)